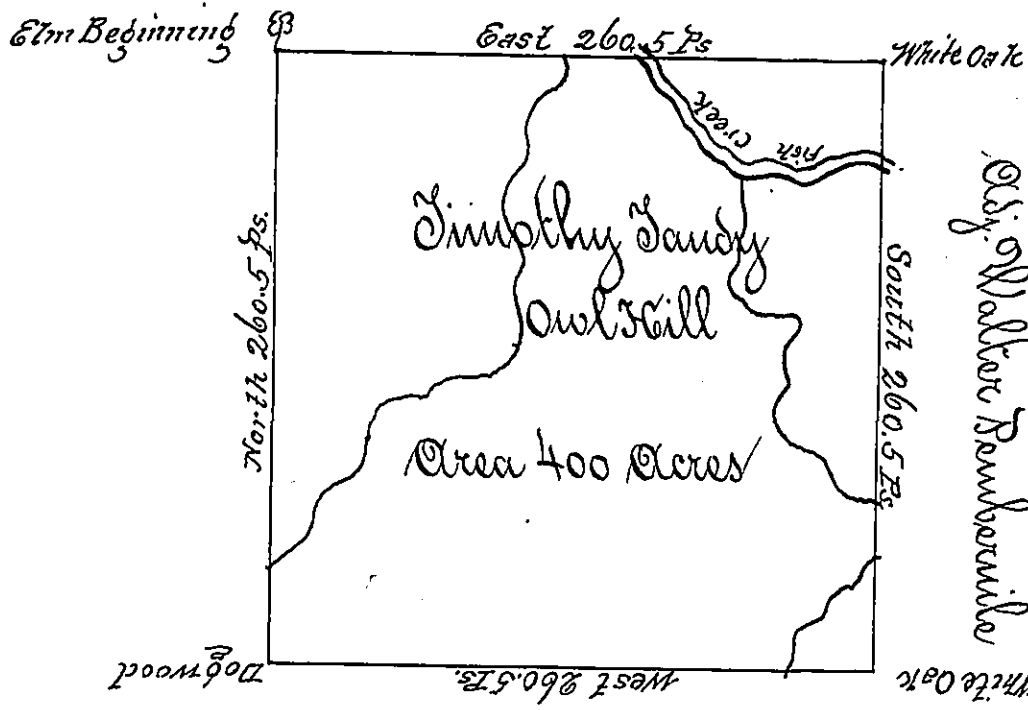


adj Patrick Dougherty



adj Daniel Bowen

The above is a Draught of a Survey made the 10th Day of February 1785 in pursu-
 ance of a warrant Granted to Timothy Sandy Dated the 25th Day of Oct^r 1784 situ-
 ate on a Branch of Fish Creek in Washington County Called Owl Hill Contain-
 ing four hundred Acres with usual Allowance of 6 per Cent for Roads—
 To John ^{Lukens} Esq^r Surv^r Gen^l Jⁿ Hooge D. D.

IN TESTIMONY that the above is a copy of the original remaining on file in
 the Department of Internal Affairs of Pennsylvania, made
 conformably to an Act of Assembly approved the 16th day of
 February, 1833, I have hereunto set my Hand and caused
 the Seal of said Department to be affixed at Harrisburg,
 this second day of July 1901.

James W. Patton
 Secretary of Internal Affairs.